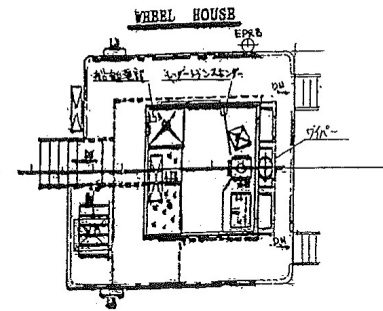
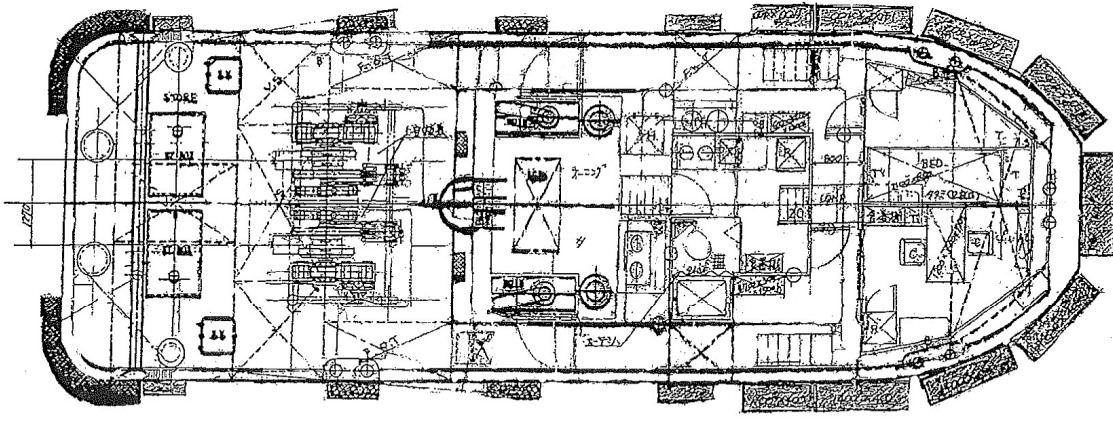
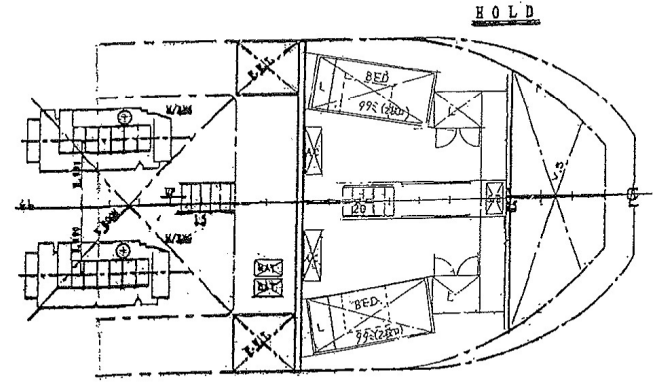
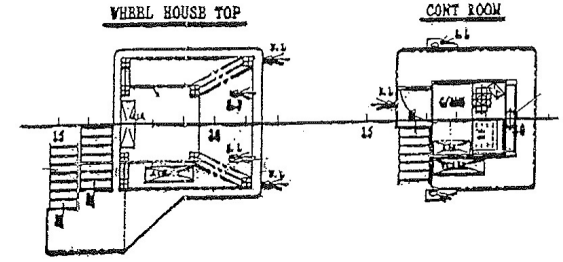
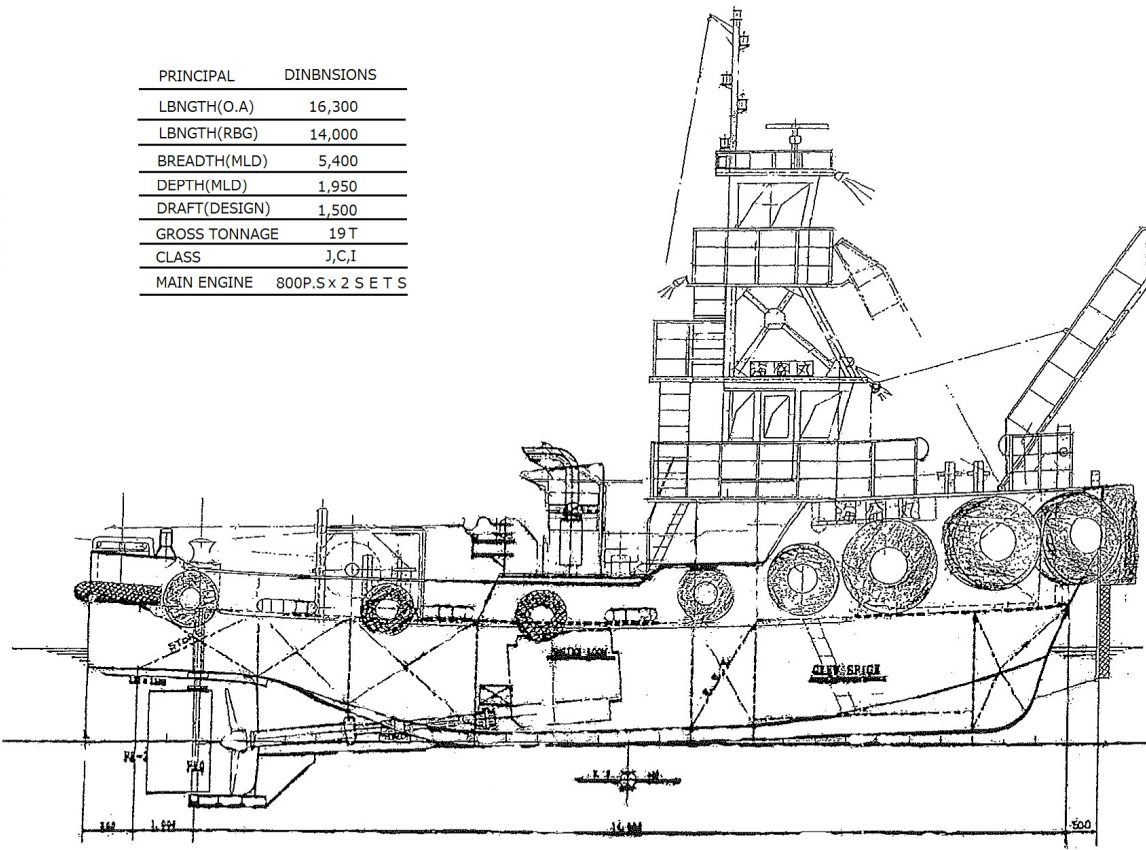


PRINCIPAL	DINBNSIONS
LBNGTH(O.A)	16,300
LBNGTH(RBG)	14,000
BREADTH(MLD)	5,400
DEPTH(MLD)	1,950
DRAFT(DESIGN)	1,500
GROSS TONNAGE	19 T
CLASS	J,C,I
MAIN ENGINE	800P.S x 2 S E T S



SHIP OWNER	
NAME OF SHIP 海盛丸	
19 G/T TYPE TUG & PUSHER	
一般配置図	
SCALE	1/60
ART NO	
DRAWND	
DATE	